



1/368 Earnshaw Road Banyo, QLD

## Prime Commercial Office!

Located in the thriving suburb of Banyo, less than 12 radial kilometers northeast of Brisbane's CBD, this property offers convenient access to Nudgee Road and the Gateway Arterial Network. Whether heading to the CBD or other areas north or south of Brisbane, transportation is a breeze.

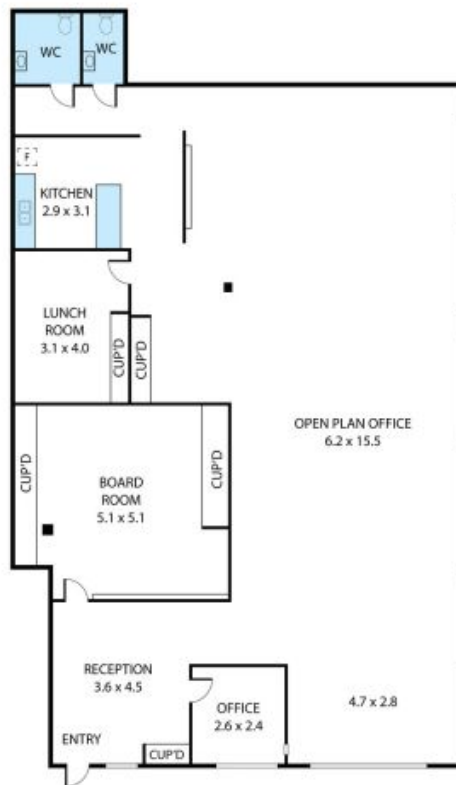
### Property Highlights:

- 227sqm of premium commercial office space
- Positioned on the ground floor for ease of access
- Impeccable presentation and corporate appeal
- A-grade standard fit-out
- Includes 7 dedicated on-site parking spaces
- Well-ventilated with ample natural light

This ground-floor commercial office space spans 227sqm and boasts exceptional quality and corporate appeal. Situated in Banyo, less than 12 kilometers from Brisbane CBD, it offers

**William Mcavoy**

0466 728 778



1/369 Earnshaw Road, Banyo 4014  
 Whilst every effort has been made to ensure the accuracy of the floor plan contained here, measurements of doors, windows, rooms and any other items are approximate and no responsibility is taken for any error, omission, or misstatement. This plan is for illustrative purposes only and should be used as such by any prospective purchaser.